



**UPDATED OUTLINE OF PROPOSED
WORK TO BE UNDERTAKEN
IN REMODELLING ST BENEDICT'S CHURCH**

**(Provided as information to the Parish
27th May 2011)**

**- to be read as an update on the Report presented
to the Parish on 20th October 2009**

Available from website

www.stbenedicts.org.nz/index.php/publications

In May 2011 the architectural and engineering drawing and reports for the redevelopment of St Benedict's Church were completed. This work was done in consultation with the Building Committee over the previous 12 months. The final proposals and plans were presented to a joint meeting of the Parish Council, Building Committee, Finance Committee and Liturgy Committee, for their acceptance on behalf of the Parish.

The architectural firm provided professional advice and guidance to address the needs of the Parish in the following areas:

- i. Accessible access ramp for us by both people with disabilities and also access for a funeral procession;
- ii. Create a versatile gathering space for 50 people seated. Associated storage and kitchen;
- iii. Address the requirement for earthquake strengthening;
- iv. Provides accessible toilets as required by the building code;
- v. Co-ordinate egress and fire protection to meet the building code;
- vi. Replace or repair the windows above the sanctuary;
- vii. Alterations to the sacristy to make better use of the space;
- viii. Electrical wiring, reporting on requirements including hearing loops, etc
- ix. New floor coverings
- x. Suitable heating for nave and foyer
- xi. Relocate the crying room/Reconciliation Room
- xii. Relocate organ/tabernacle as required
- xiii. Lower the sanctuary floor level.

The architects presented at the joint meeting the overall response to the above issues and how they came together as the proposed outline of work to be done. Some of the details of these solutions have been previously communicated to the committees and the Parish but this was a presentation of the whole project.

Based on the presentation from the architects and the plans submitted the joint meeting accepted the proposed outline of work and plans and thanked the architects for the work they had provided to us.

This publication of architectural concept pictures and plans shows what is to ensure St Benedict's is a suitable worshipping space for our faith family and hopefully will serve us well into the foreseeable future.

Timeline

The building work is expected to take no more than six months. During this time St Benedict's Church will be closed. The parish will continue to operate Sunday, and other large services, at St John's Church in Ngaio until remodelling is completed. Other arrangements will be made about the provision of daily Masses etc.

PROPOSED RAMP FOR ACCESSS ALONG EVEREST STREET



INTERIOR VIEWS OF SANTUARY SPACE AND NAVE

PROPOSED



(NOTE: a corpus will be part of the new crucifix on the rear wall of the sanctuary)

EXISTING

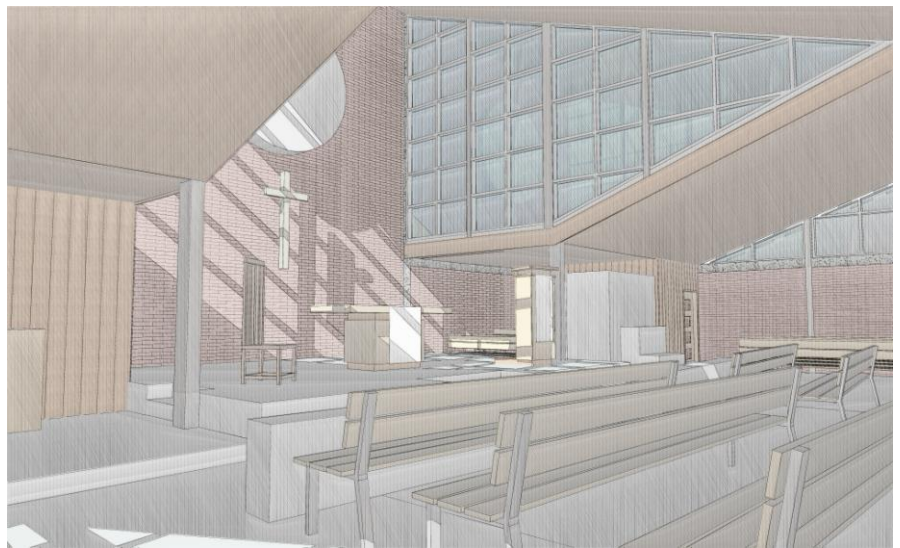


PROPOSED



(NOTE: a corpus will be part of the new crucifix on the rear wall of the sanctuary)

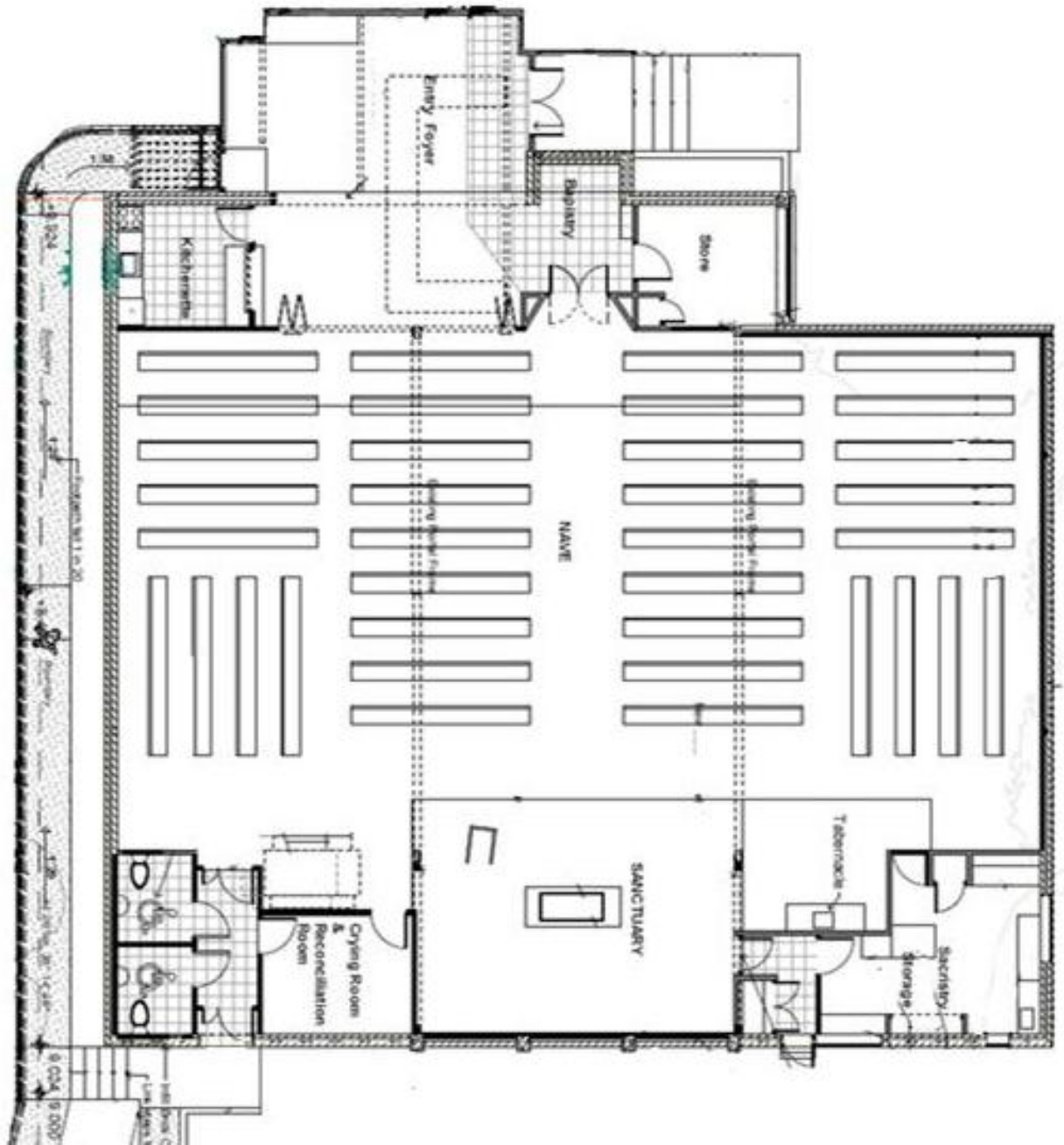
EXISTING



INTERIOR VIEWS OF REMODELLED GATHERING SPACE



PROPOSED LAYOUT OF CHURCH SHOWING REVISED SANCTUARY, SACRISTY AND FOYER SPACE



DETAIL OF NEW ACCESS RAMP ALONG EVEREST STREET

